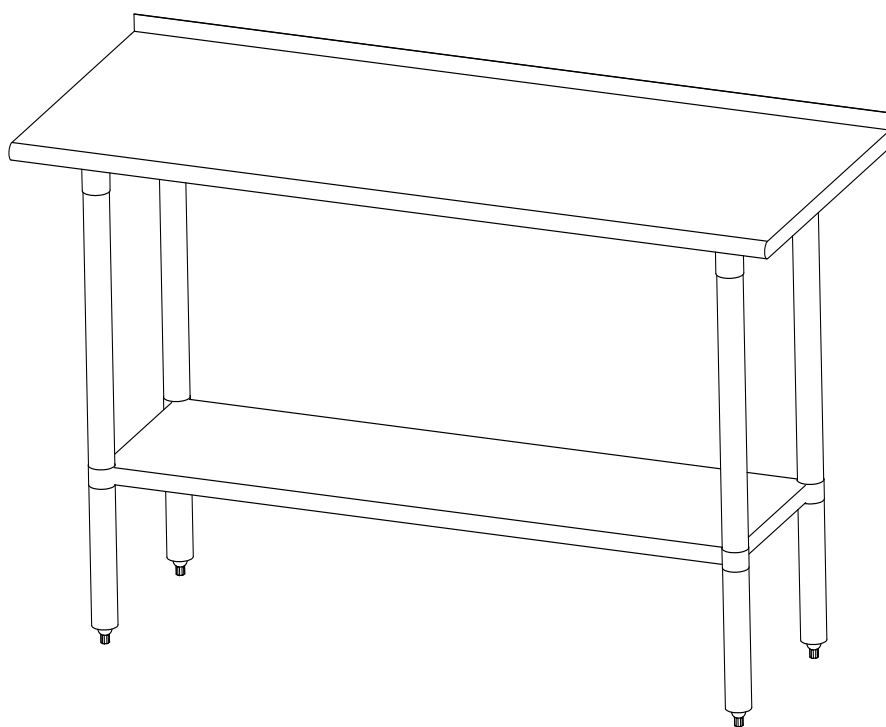




USE AND CARE GUIDE

STAINLESS STEEL KITCHEN TABLE



Questions, problems, assembly help, missing parts?

We will gladly help and ship your replacement parts free of charge.

If you have any question related to product please free to contact our customer service mail: Rockpointservice@hotmail.com

All the detail Assembly issue pls review the website: www.HiRockpoint.com

IMPORTANT

THIS INSTRUCTION CONTAINS IMPORTANT SAFETY INFORMATION.
PLEASE READ AND KEEP FOR FUTURE REFERENCE



WARNING

- Do not allow children to climb on unit
- Serious or fatal crushing injuries can occur from furniture tip-over, To prevent this furniture from tipping over .
- This unit contains small parts which can be swallowed by children and pets. Keep children and pets away during assembly. To avoid danger of suffocation, always keep plastic bags away from children and pets.

BEFORE YOU START

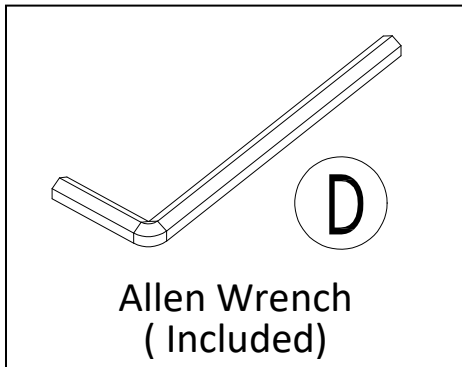
- Separate and count all parts and hardware.
- If using a power tools, please be ware to slow down and stop when screw is tight. Failure to do so may result in stripping the screw.
- Requires two people for assembly.

This manual applies to products

NO	MODEL(DxL)
1	24x24in
2	24x30in
3	24x36in
4	24x48in
5	24x60in
6	24x72in
7	30x48in
8	30x60in
9	30x72in

Pre-installation

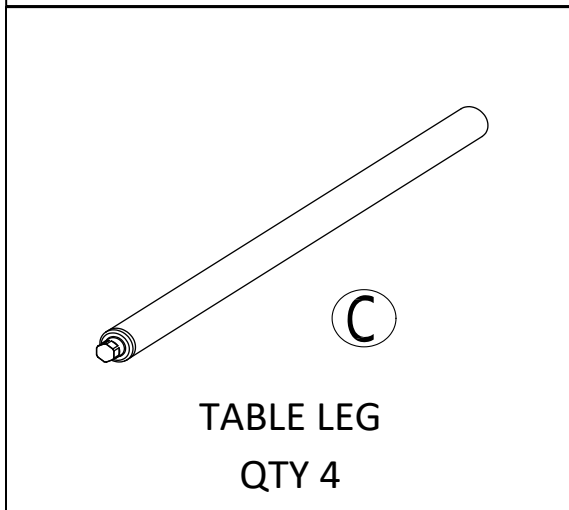
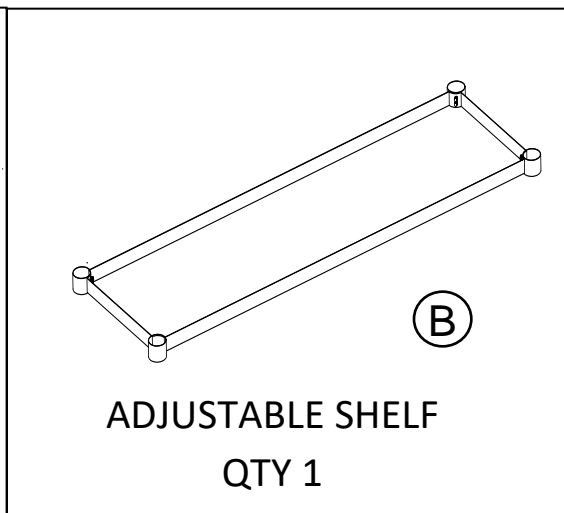
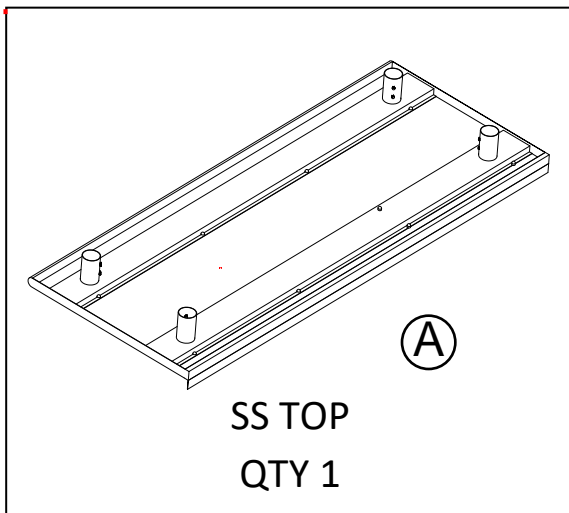
TOOLS REQUIRED



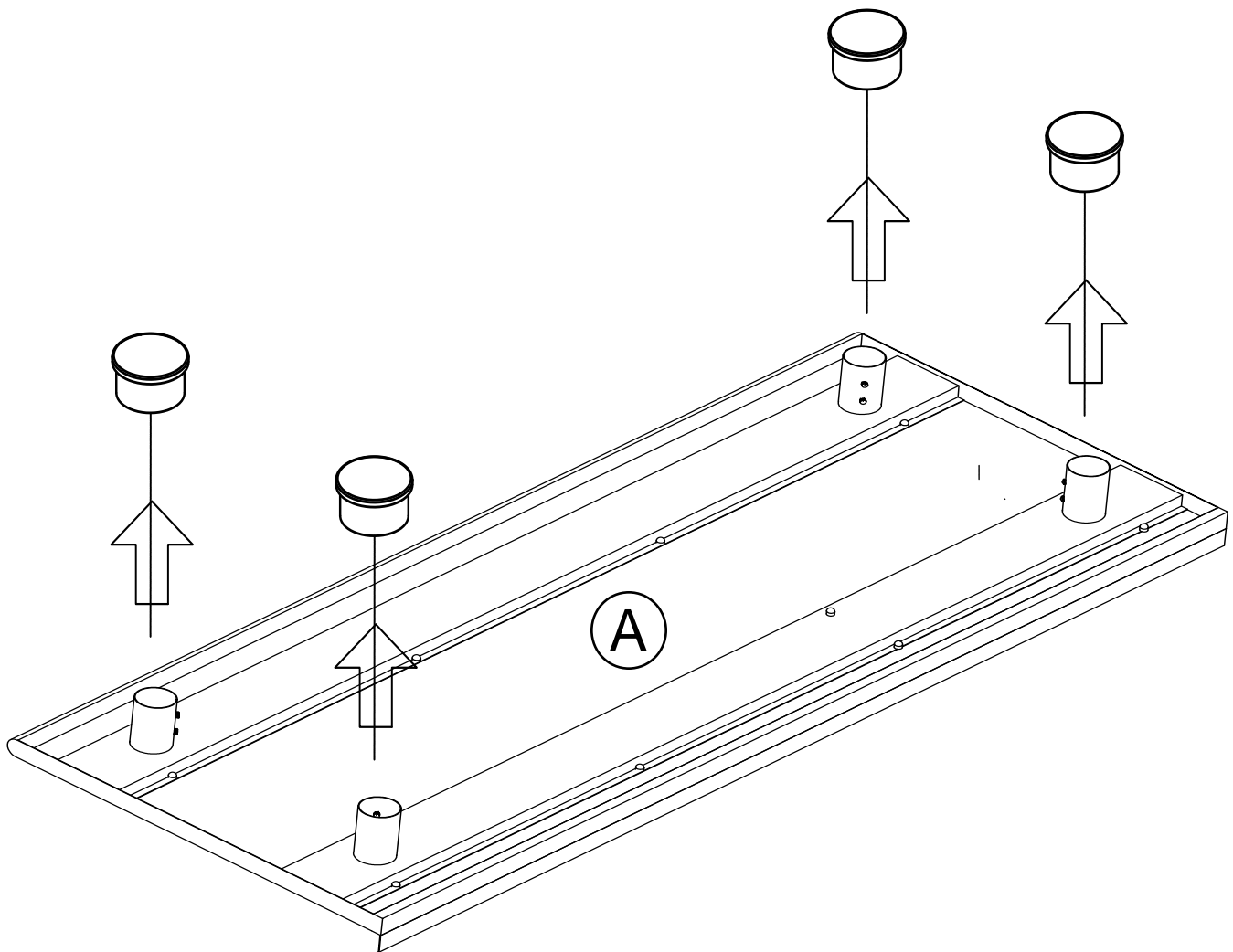
PART LIST



NOTE: Part not shown to actual size.

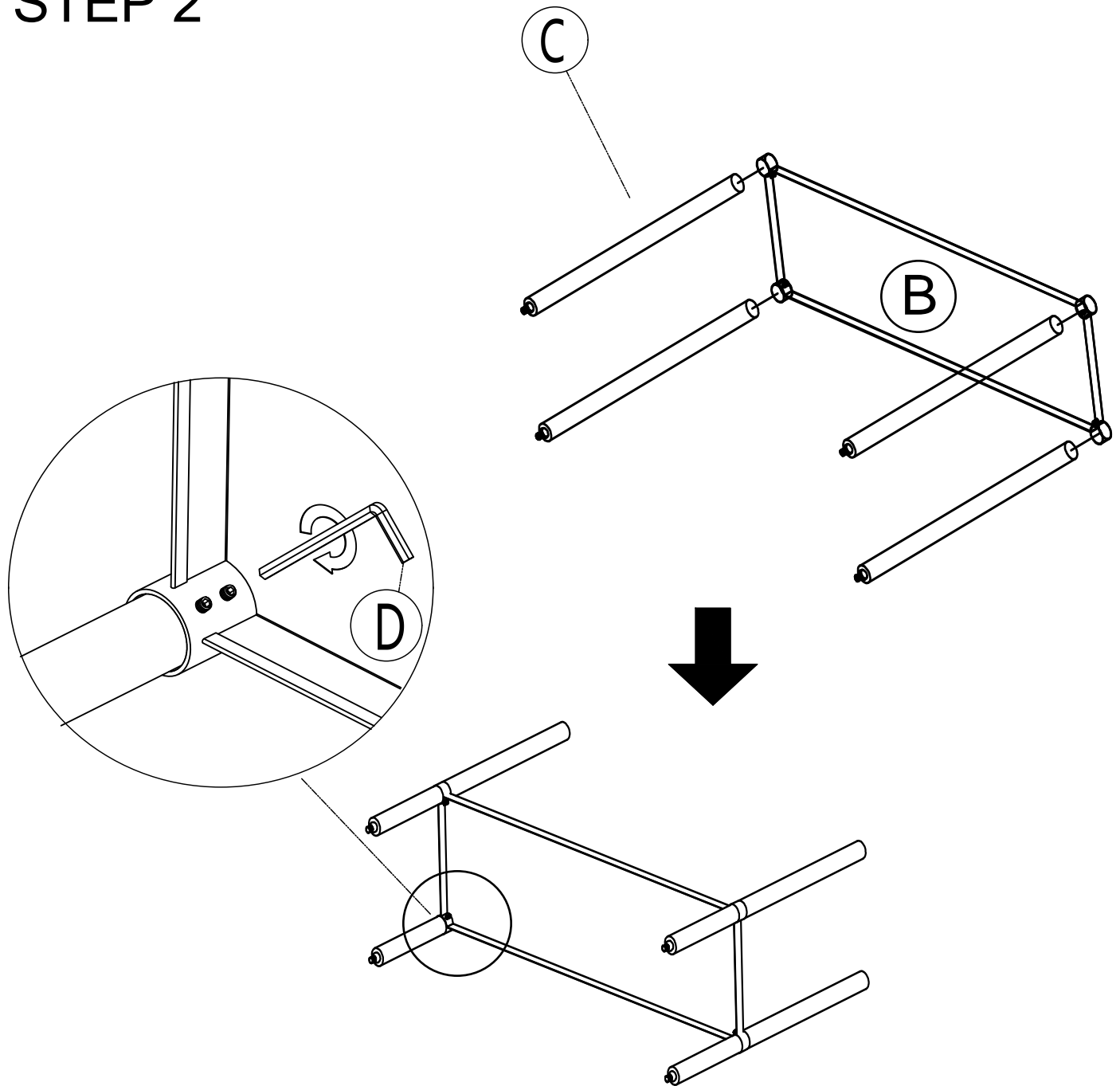


STEP 1



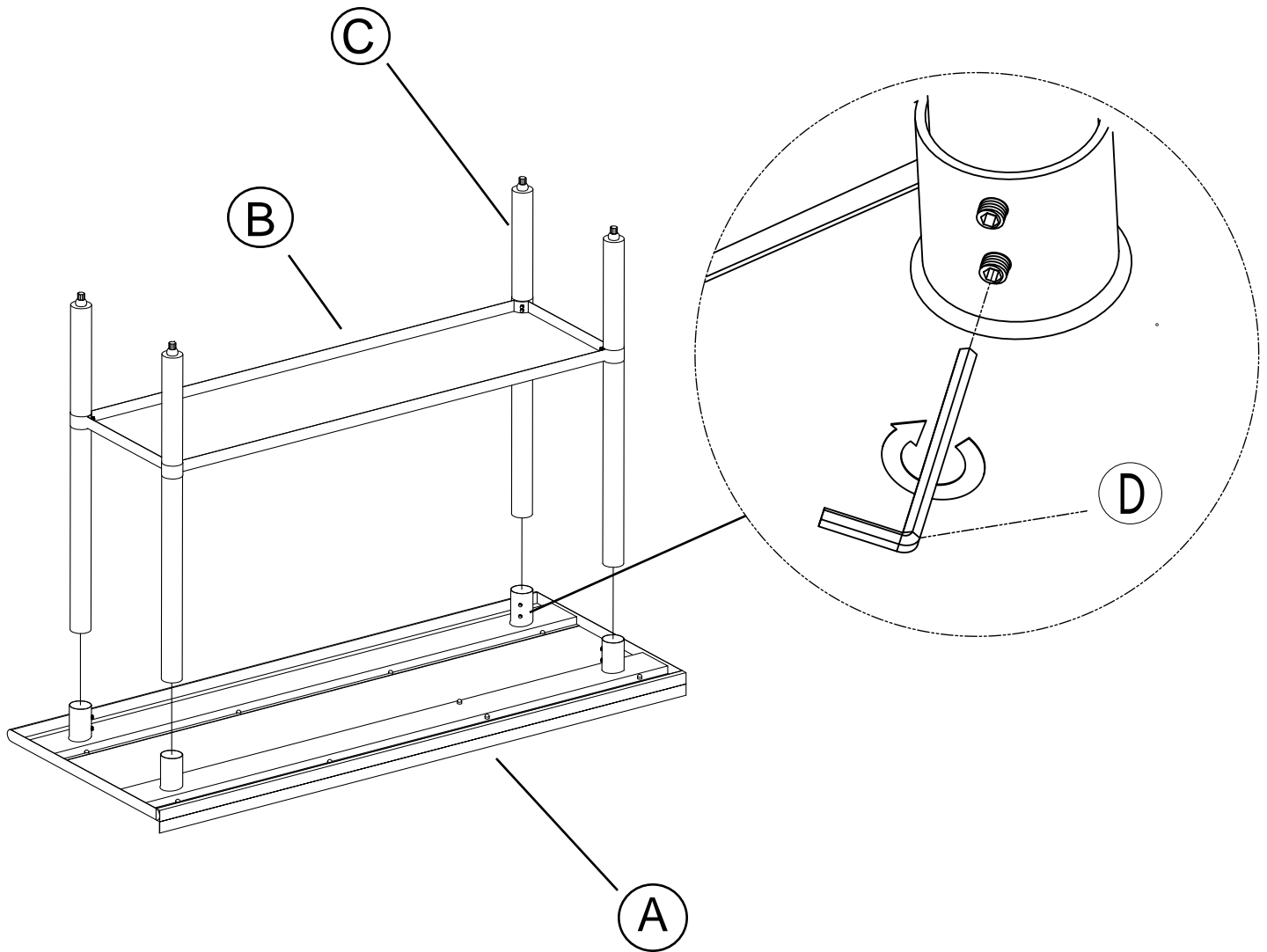
1. Take out the plastics cover from SS Top(A)

STEP 2



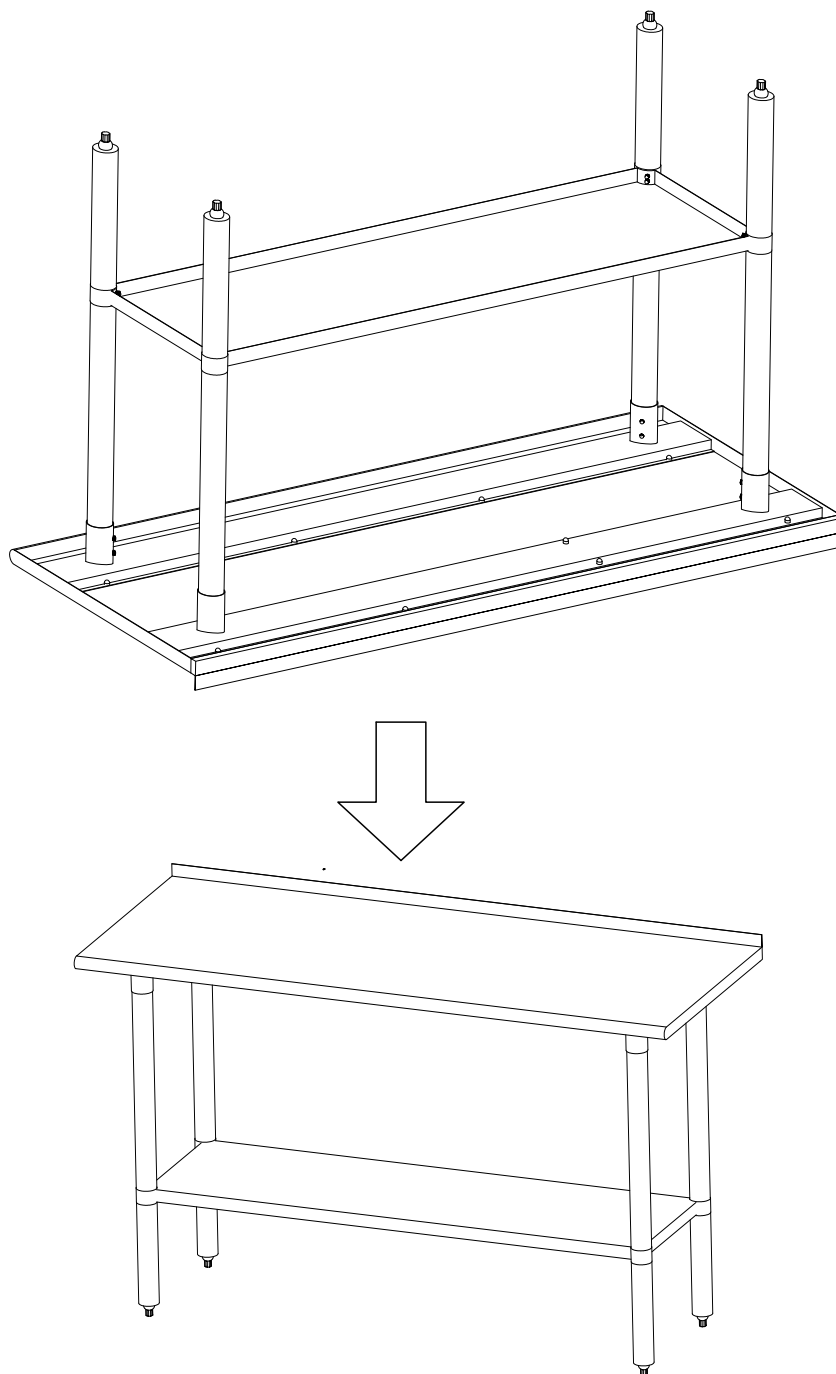
1. Insert table leg(C) into the Circular tube of Adjustable shelf(B)
2. Adjust shelf(B) to the appropriate height and Tighten the screws on Circular tube of Adjustable shelf(B) with the Allen wrench(D)

STEP 3



1. Insert Table leg(C) into the Circular tube of SS Top(A)
2. Tighten the screws on SS Top(A) bottom tube with the Allen wrench(D)

STEP 4



1. Turn the workbench over and remove the protect film on SS Top(A) and Adjustable shelf(B)

**Your assembly should now be
complete.**

Thank you for your purchase.

“KEEP THESE INSTRUCTIONS FOR FURTHER REFERENCE”